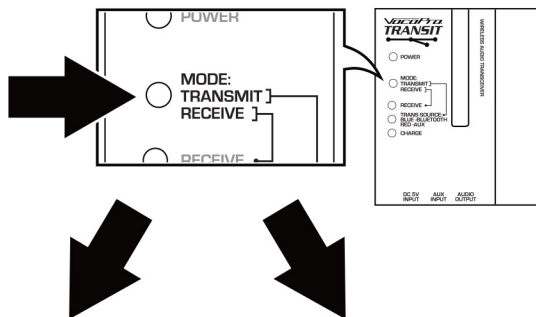


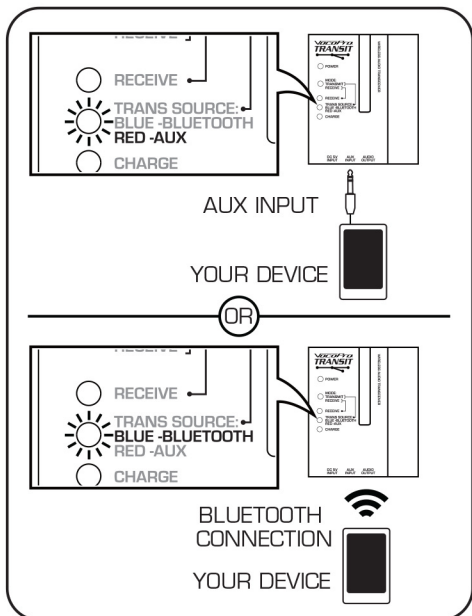
TRANSIT

QUICKSTART GUIDE

- Press the POWER button to turn the unit on.
- Press the MODE button to toggle between TRANSMIT and RECEIVE mode.
- Use TRANSMIT mode to send audio wirelessly to other receiving Transit units. Connect an audio source such as a mobile device or media player using Bluetooth or a 1/8" aux cable. NOTE: Plugging in an aux cable will automatically switch input to AUX and will deactivate Bluetooth connection.
- Use RECEIVE mode to receive audio from other transmitting Transit units. Connect powered speakers or an audio system using a 1/8" aux cable.



TRANSMIT MODE



RECEIVE MODE

